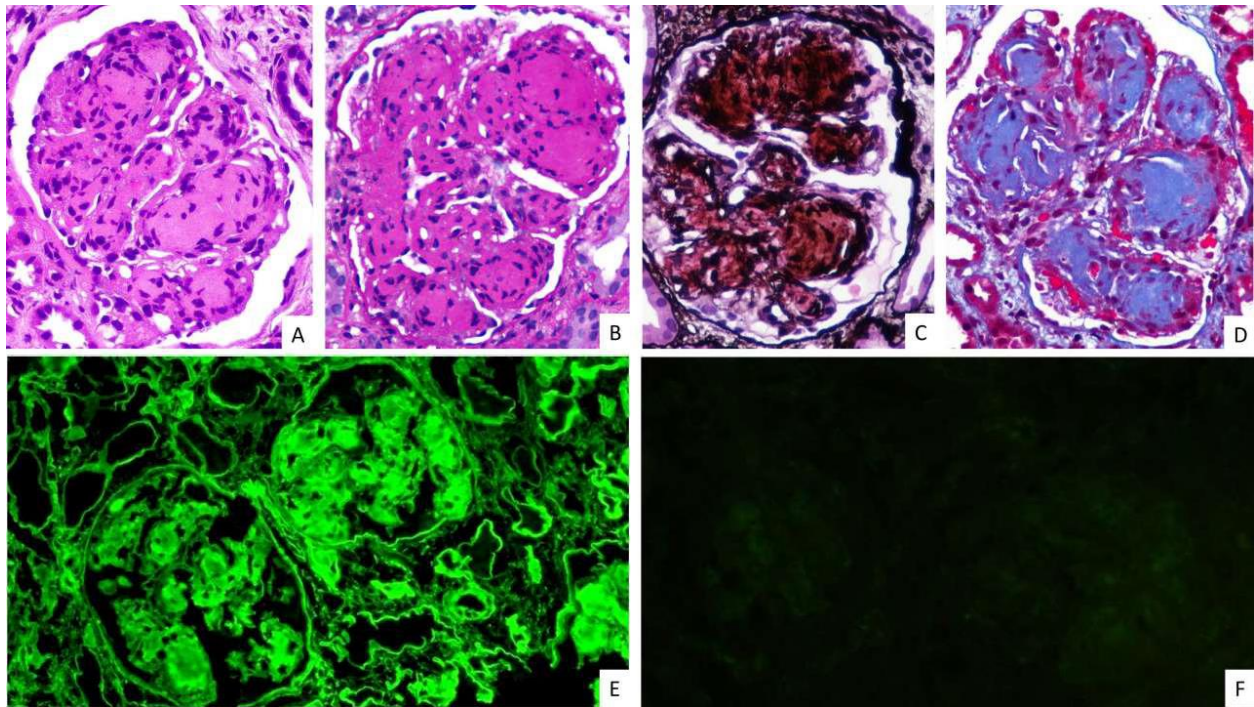


Supplementary Figures



Supplementary Figure 1: The glomerulus exhibits nodular mesangial expansion on hematoxylin and eosin staining (A). Nodules are periodic acid Schiff positive (B), weakly silver positive on Jones methenamine silver (C), and blue on Masson trichrome stain (D). Immunofluorescence study shows diffuse linear staining of tubular basement membrane and glomerular basement membrane and smudgy mesangial staining for kappa light chains (E). Staining for lambda light chains is negative on the tubular basement membrane and glomerular basement membrane (F).